

JetSurfer



INSTRUCTIONS
INSTRUCTION

INTRODUCTION

Congratulations on purchasing a JetSurf™! You have become a part of a community who appreciates high tech innovation at a high quality. Your JetSurf™ was designed as an extreme sport device for one person made of carbon fibres and a high tech engine.

Before you start, take some time to get familiar with your JetSurf™ and how it works. For your safety, we urge you to take full responsibility for keeping your JetSurf well maintained. Scheduled service is a must, of course, but it's just as important to observe the break-in guidelines and perform all pre-ride checks and post-ride maintenance as detailed in this manual.

This owner's manual has been prepared to better acquaint you with JetSurf's™ various controls, maintenance, and safety guidelines. Although merely reading this information does not eliminate all hazards, understanding and application of the information provided herein will facilitate the correct use of a JetSurf™. The illustrations in this manual display the typical construction of different assemblies and may not be completely representative of the full detail or exact shape of all the parts; however, they represent parts that have the same or similar function.

It should be understood that this manual might be translated into other languages. In the event of any discrepancy, the English version takes precedence for accuracy. Specifications are given in the SAE U.S. equivalent with the SI metric system in parenthesis. Where precise accuracy isn't required, some conversions are rounded off for easier use.

We strongly recommend that you read this owner's manual before your first ride. It's full of facts, instructions, safety information, and helpful tips. To make it easy to use, the manual contains a table of contents, a detailed list of topics at the beginning of each section, and an index at the back of the book. As you read, you'll find information that is preceded by a symbol. This information is intended to help you avoid damage to your JetSurf, other property, or the environment.

As a JetSurf™ owner, you have joined a large community of riders who want to ensure that there are always good places to ride. When you ride, be considerate of other boaters, swimmers, and people on shore. Keep the noise level down; don't jump wakes, and only ride in areas where it's legal to ride JetSurfs™ and approved by the local authorities.

If you have any questions about your JetSurf™, or if you ever need special service or repairs, remember that your JetSurf™ team knows your JetSurf the best and is dedicated to your providing you complete satisfaction.

To be well informed with newest information visit the following website: www.jet-surf.com

California Proposition 65 Warning:

WARNING

Engine exhaust, some of its constituents and certain vehicle components contain or emit chemicals known to the State of California to cause cancer and birth defects or other reproductive harm.

TABLE OF CONTENTS

These pages give an overview of the contents of your owner's manual. The first page of each section list the topics covered in that section.

Safety Important safety information you should know, plus a look at the safety related labels on your JetSurf™.	4
Controls & Features The location of controls on your JetSurf™ and operating instructions for various controls and features.	6
Before Riding The importance of wearing a personal flotation device (PFD) and other protective gear, how to make sure you and your JetSurf™ are ready to ride.	10
Basic Operation & Riding How to start and stop the engine, and operate the JetSurf™. Riding precautions and important information about launching and riding the JetSurf™.	20
Servicing your JetSurf™ Why your JetSurf™ needs regular maintenance, what you need to know before servicing your JetSurf™, an owner maintenance schedule, and instructions for specific maintenance and adjustment items.	28
Tips How to store and transport your JetSurf™. How to be an environmentally responsible rider.	41
Taking Care of the Unexpected What to do if you capsize, your engine won't start, etc.	45
Technical Information Serial numbers, technical specifications, and other technical facts.	51
Consumer Information	45
Reporting Safety Defects	56

SAFETY



This section presents some of the most important information and recommendations to help you operate your JetSurf™ safely. Please take a few minutes to read these pages. This section also includes information about the location of safety labels on your JetSurf™.

Your safety, and the safety of others, is very important, and operating a JetSurf™ is an all-important responsibility. To help you make informed decisions about safety, we have provided safe operating procedures and other safety information in this manual and on labels. This information alerts you to potential hazards that could harm you or others. Of course, it isn't possible to warn you about all the hazards associated with operating or maintaining a JetSurf. You must use your own good judgment.

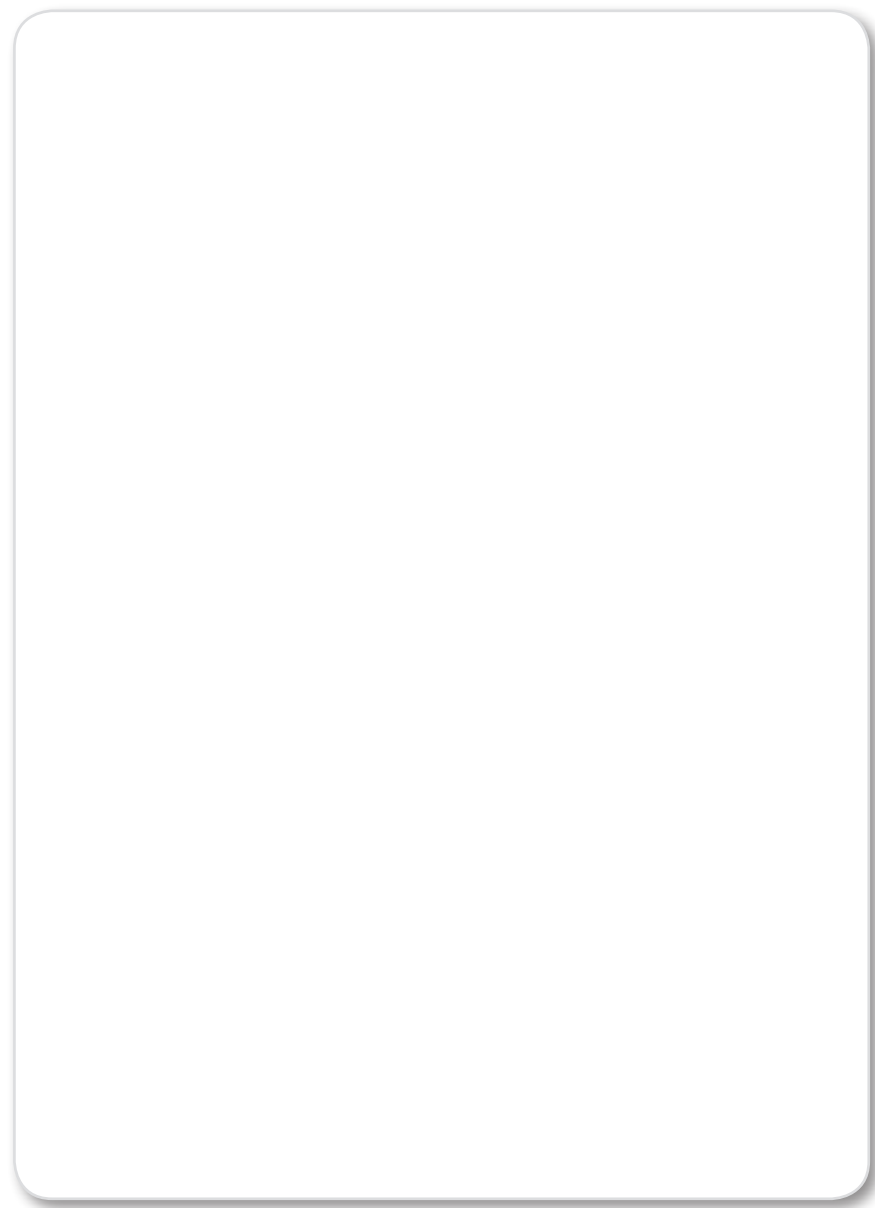
This entire manual is filled with important safety information. Please read it carefully. You will find safety information in a variety of forms, including:

Safety Labels – Each safety label on the JetSurf™ either warns you of potential hazards that could cause serious injury or they provide important safety information. Please read these labels carefully and don't remove them. If a label comes off or becomes hard to read, contact your JetSurf™ dealer for a replacement. **(Labels on Page 5)**

- **Safety Messages** – preceded by a safety alert symbol and one of three signal words: **DANGER, WARNING, or CAUTION**

These signal words mean you can be **KILLED** or **SERIOUSLY INJURED** if you don't follow instructions.

- **Safety Headings** – such as Important Safety Reminders or Important Safety Precautions.
- **Safety Section** – such as Safety.
- **Instructions** – how to use the JetSurf™ correctly and safely.



**Your JetSurf™ is a high performance device, not a toy.**

We highly recommend that someone operating a JetSurf™ must be at least 16 years old. We do not recommend pregnant women operating a JetSurf™. Your JetSurf™ can provide many years of service and pleasure if you take responsibility for your safety and the safety of others, and understand the challenges you may encounter while riding. There is a lot that you can do to protect yourself and others when you ride. You'll find many helpful recommendations throughout this manual. The following are the ones that we consider most important.

**Avoid Collisions**

The most common type of accident is colliding with another vessel. In addition, collisions result in more injuries and deaths than any other type of watercraft accident. Understanding how your JetSurf™ operates is key to avoiding collisions. The JetSurf™ does not have brakes, so you must plan ahead if you are slowing to a stop. The is propelled by jet thrust and can be maneuvered at low speed by leaning left or right, similar to surfing or water skiing. However, the engine should be running with some throttle applied to maintain your balance and initiate a controlled turn. Without jet thrust, you will not have any forward movement to turn effectively.

Ride Defensively

Be aware of others in the water around you. Knowing the rules of the waterway can help keep you out of trouble (page 8). Keep a safe distance from people, objects, and other watercraft. Remember that if you are on a collision course, it's your responsibility to avoid the collision.

Wear a PFD (Personal Flotation Device)

Any time you ride your JetSurf™, you should wear a Coast Guard-approved Type I, II, or III PFD. It's the law in all states and it could save your life. Your PFD is your most important piece of safety apparel because it offers the best protection against drowning. A PFD should fit you properly and securely. A brightly colored PFD will make you more noticeable in the water. Not wearing a PFD increases the chance of drowning if you fall off the JetSurf™. Although not required by law, we recommend you also wear appropriate protective clothing, including a wetsuit bottom or equivalent, footwear, gloves and eye protection.

Helmets

A helmet can offer some head protection in a collision or impact, but it can also cause severe injuries in other situations. You should decide for yourself whether or not to wear a helmet when riding your JetSurf™. Think about the conditions and environment in which you'll be riding. Will the water be crowded or open? Smooth or choppy? Shallow and rocky, or deep? Each time you ride, you'll need to decide if a helmet is necessary. However, if you fall into water while riding and the helmet catches the water's surface as you fall, the helmet could cause choking, severe neck injuries or death.

Get Training

According to the Coast Guard, more than 85% of all fatalities involve people who did not have proper boating instruction. You can get boating and PWC instruction from a number of different agencies. Even if you have ridden other powered watercraft, take time to become familiar with how the JetSurf™ works and handles. Practice in a safe area away from other watercraft and swimmers, until you build your skill level and get accustomed to the JetSurf™'s speed and handling.

Ride Within Your Limits

Exceeding your ability can increase the risk of losing control and causing a collision. Never ride beyond your personal ability or faster than conditions permit. Remember that alcohol, drugs, fatigue, and inattention can significantly reduce your ability to make good judgments and ride safely.

**Don't Drink and Ride**

Alcohol and boating don't mix. Even one drink can reduce your ability to respond to changing conditions, and your reaction time gets worse with every additional drink. So don't drink and ride, and don't let your friends drink and ride either.

Keep Your JetSurf™ in Safe Condition

It's important to keep your JetSurf™ properly maintained and in safe riding condition. To help avoid problems, inspect your JetSurf™ before every ride and perform all recommended maintenance. Never exceed load limits (page 58), and do not remove any original equipment or modify your JetSurf™ in any way that would change its design or operation.

Attach Engine Kill Switch Cord (Lanyard) to your wrist and keep it free so that the engine stops if the operator falls off. After riding, remove the cord from the JetSurf™ to avoid unauthorized use by children or others.

Avoid Aggressive Maneuvers

To reduce the risk of control loss and collisions, avoid making sharp turns or jumping waves or wakes which can increase the risk of back or spinal injury (paralysis), facial injuries, and other broken bones.

Do Not Apply Throttle When Anyone Is Directly Behind The JetSurf™

Turn the engine off or keep engine at idle. Water or debris exiting the jet thrust nozzle can cause severe injury.

Keep Away From The Intake Grate When The Engine Is Running

Hair, loose clothing, or PFD straps can become entangled in moving parts resulting in severe injury or drowning.

**RIDE DEFENSIVELY**

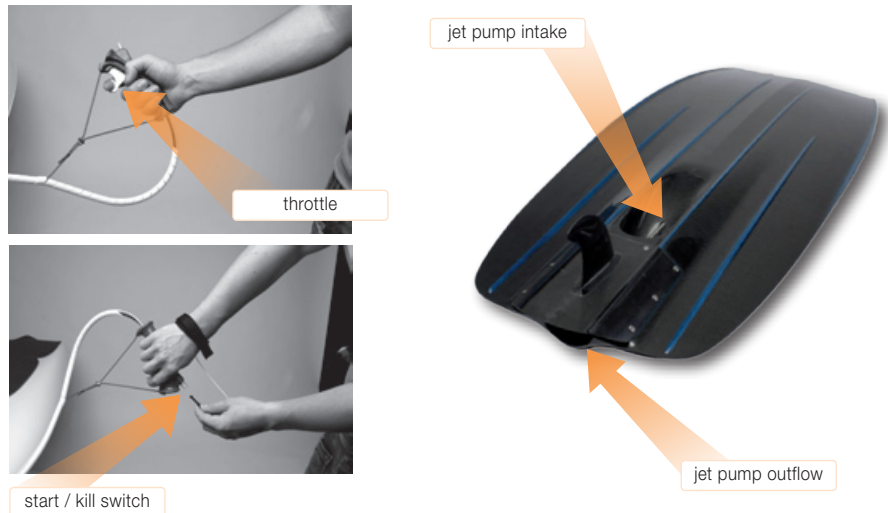
1. Maintain a safe speed and keep a safe distance away from people, objects, and other watercraft.
2. Do not follow directly behind other powered watercraft or boats
3. Do not ride near others or spray or splash them with water.
4. Avoid sharp turns or other maneuvers that make it difficult for others to avoid you or determine what direction you are going.
5. Avoid areas with submerged objects or shallow water.
6. Take early action to avoid collisions. Remember, JetSurfs™ do not have brakes.

**DO NOT RIDE AT NIGHT!****RESPECT WEATHER WITH CARE!**

CARBON TECHNOLOGY IN THE ORIGINAL

www.jet-surf.com

CONTROLS AND FEATURES



1. Inserting magnetic plug (for 5 seconds) will activate electronics.
2. Second insert will automatically start the engine, pulling out will stop engine.
3. After 3 minutes of no activity, the ignition system will turn off. To start the engine again, activation step is necessary (step 1).
4. The throttle lever controls the speed of the JetSurf™. The throttle lever will automatically return to the upright position (engine idle) when the lever is released.
5. The magnetic plug should be worn around the rider's wrist where rider holds control handle. If the rider falls off the JetSurf™ or away from the control handle, the engine will shut off immediately when the magnetic plug is pulled from the engine kill switch. To prevent an accidental engine start up, remove the magnetic plug from the engine kill switch whenever the JetSurf™ is not being operated.
6. The jet pump intake draws water through the propulsion system. When the engine is running, do not stick your hands, feet or other objects near the intake opening.

BEFORE RIDING



Operator Training

Developing your riding skills is an on-going process. Even if you have ridden other watercraft, take time to become familiar with how the JetSurf™ operates and handles. To build your skill level, practice riding the JetSurf™ in calm water close to shore. Do not ride farther out until you get accustomed to the JetSurf™'s controls and feel comfortable with the way it handles. We urge all riders to take a certified boating course.

For U.S. customers:

We recommend to take certified course approved by the U.S. Coast Guard or U.S. Power Squadron, or by your state. For boating safety course information in your area, call your nearest U.S. Coast Guard Auxiliary, U.S. Power Squadron, Red Cross, or state boating law enforcement office, or call the Boat/U.S. Foundation Course Hotline, 1- 800-336-BOAT. The national number for the Coast Guard Customer Info Line is (800) 368-5647.

You can find more boating safety information on-line:

- » The U.S.C.G. Office of Boating Safety: www.uscgboating.org
- » The U.S. Power Squadron: www.usps.org

PRE-RIDE INSPECTION

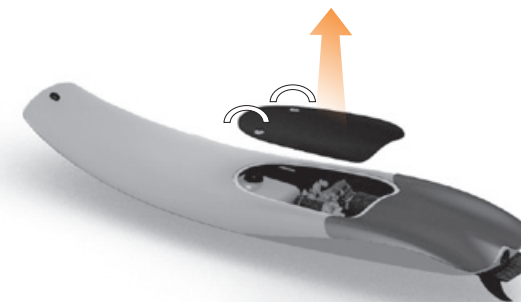
Before each ride it's important to inspect your JetSurf™ and make sure any problem you find is properly maintained. Remember before each inspection, to make sure the magnetic plug is not inserted in the engine kill switch. A pre-ride inspection is a must for safety, and having a problem occur on the water could be a major inconvenience.

WARNING:

Improperly maintaining your JetSurf™ or failure to correct a problem before riding can cause an accident in which you could be seriously hurt or killed.

Check the following items before putting the JetSurf™ in the water or starting the engine:

Engine: Remove the hood to the engine compartment to vent gasoline fumes.



Starting the engine without ventilating the engine compartment could cause a fire or explosion that could seriously injure you or others in close vicinity to the PowerSki Jetboard. Always vent the engine compartment prior to starting the engine. Check water circulation with a hose before you ride (see Flushing Procedure, page 39)



WARNING

Operating the engine without proper water flow will cause overheating to some critical parts of the system that could damage or destroy the engine.

Hull: Inspect for cracks or damage. Remove any marine growth.

Gasoline: Before each ride fill fuel tank and after last ride empty all fuel. Never transport JetSurf™ with a filled fuel tank!

Jet Pump: Check that there are no obstacles or debris obstructing the jet intake grate, propeller, and driveshaft. Remove any debris you might find. If while riding, the JetSurf™ does not run with sufficient water thrust or propulsion, stop the engine immediately and check the pump for obstructions or debris and remove anything you might find there before restarting the engine.

Bilge: Look for water or fuel in the engine compartment. If you find water or fuel; drain the excess fluids from the engine compartment and check for potential leaks.



Loose Parts: Look for anything that appears unusual or out of place. Remove any objects that are not integral to the JetSurf™'s operation. Lost parts in the engine compartment might cause serious damage to the hull or engine!

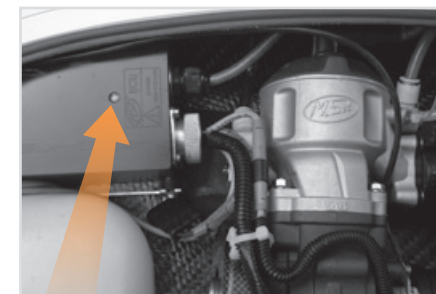


IMPORTANT!

It is the owner's responsibility to immediately remove all excess water from the engine compartment. Failure to remove any accumulation of water in the engine compartment can cause damage to the engine and also damage electrical components. Water damage is not part of the warranty agreement from the dealerships or the manufacturer. Owners will be held solely responsible for the financial costs to repair or replace any engine or electrical components that are damaged by failure to remove excess water left inside a JetSurf™.



Engine Stop-Start: After ventilating the engine compartment insert the magnetic plug into the kill switch. It will activate control unit (LED light on Electronic Control Unit will start blink). Pull out the kill switch and insert again, engine will start automatically after 5 seconds. After start-up, stop the engine by pulling out the magnetic plug.



LED light

Throttle: Check for free movement of the throttle and adjust if necessary. This can be done by pushing down on the throttle lever to determine if it moves smoothly without sticking, and snaps back automatically to the engine idle position when released. The throttle cable runs from inside the handle down the arm pole into the board cavity and connects to the carburetor.



Test Procedure:

1. Press down fully on the thumb throttle and release several times.
2. Check to see if thumb throttle returns automatically to the rest/idle position.



WARNING

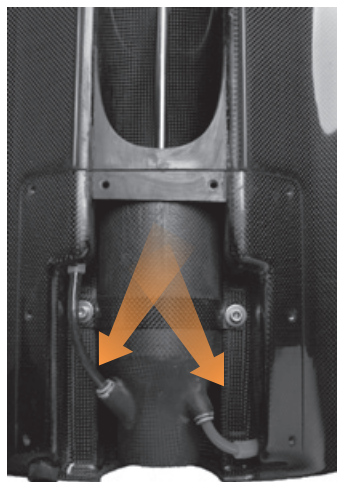
If the thumb throttle sticks down and does not return to its rest/idle position do not ride the JetSurf™.

Fin: JetSurf™ must not be transported with fastened stabilizing fin because of safety reasons. Stabilizing fin must be fastened at the place of riding and before transporting JetSurf™ must be removed. Before fastening stabilizing fin the cooling hoses must be checked.



WARNING

Riding without fitted cooling hoses will cause overheating that could damage or destroy the engine



Maintenance: After each day of riding.

1. Hold or hang the handle in an elevated, vertical position and spray a generous amount of WD-40, or equivalent, inside the throttle lever aperture and down the throttle cable while pressing and releasing the throttle lever several times. Keep the handle in this vertical position for at least five minutes to give the lubricant time to flow down the throttle cable.
2. Spray a generous amount of WD-40, or equivalent, on the throttle cable where it attaches to the carburetor while also pressing down and releasing the throttle several times.



BE SURE to correct any problem or malfunction you find, or have it corrected by your local JetSurf™ dealer before you go riding.

BASIC OPERATION & RIDING

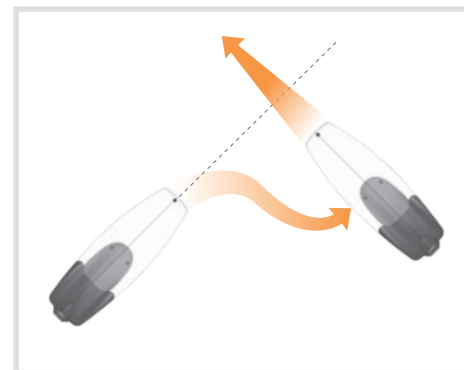
This section gives basic riding instructions, including how to start and stop the engine, and how to use the throttle. It also provides navigation rules, how to protect your new engine, and enjoy optimum performance and service life.

Navigation Rules

The JetSurf™ is boat. You need to know and obey the rules of the waterway. Like automobile traffic rules, they establish who has the right-of-way and are enforced by the U.S. Coast Guard, and other local and international law enforcement agencies.

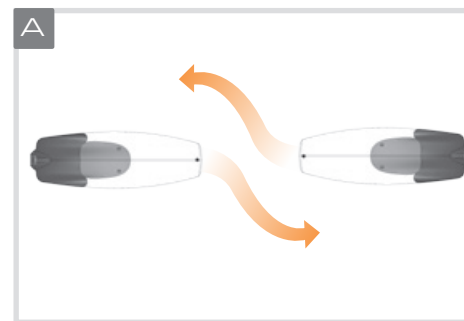
The information in this section provides the basic rules. We recommend that you obtain more information about navigation from your state of residence.

For U.S. customers: You can take a boat handling and seamanship course from the Coast Guard Auxiliary, the U.S. Power Squadron, or a volunteer organization. These groups can provide you with detailed training and other relevant information.



CROSSING:

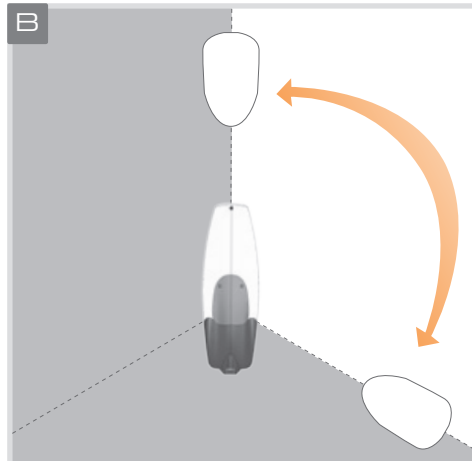
If you and another vessel are crossing paths close enough to risk a collision and the other vessel is on your right (starboard) side, you must yield or stay out of its way. If the other vessel is on your left (port) side, you must maintain your course and speed, as long as the other vessel yields the right-a-way to you, as it is required.



RIGHT-OF-WAY:

When two boats are approaching each other on the water, one has the right-of-way and is designated the "stand-on" vessel. The other boat must yield or give way and is designated the "give-way" vessel. In illustration A, you are the JetSurf™ in the center. You are required to yield to any vessel shown in the white

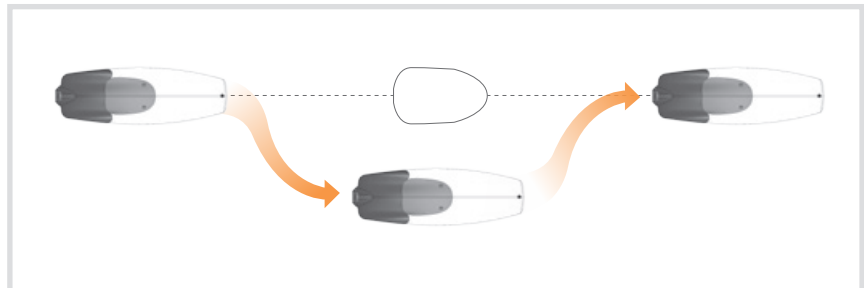




» area (you are the "give-way" vessel). Any vessels shown in the shaded area must yield to you (you are the "stand-on" vessel). If both of you are heading directly toward one another, illustration B, you both must give way. You should turn right to keep the approaching vessel to your left or port side. This rule does not apply if both vessels will be clear of each other if you continue on your set course and speed.

OVERTAKING & PASSING:
If you are passing another vessel, you are the "give-way" vessel.

The other vessel is expected to maintain its course and speed and you are required to stay out of its way until you are clear of it. If another vessel is passing you, you should maintain your course and speed so that the overtaking vessel can steer safely around you.



NON-MOTORIZED VESSELS: such as sailboats, sailboards, canoes, etc., always have the right-a-way with the following exceptions;

1. When a sailing vessel is overtaking a power vessel, the power vessel has the right-a-way.
2. Sailing vessels must keep clear of fishing vessels.
3. In a narrow channel, non-motorized vessels cannot interfere with the safe passage of a power vessel.

JetSurf™ Propulsion

The JetSurf™ is water-jet propelled. The engine is connected to a driveshaft that rotates an impeller located within the jet pump housing underneath the JetSurf™. Water, drawn through the intake grate by the rotating impeller, passes into a venturi in the jet pump nozzle, which accelerates its flow to increase thrust. Pushing down on the throttle lever increases thrust that will increase speed. Releasing pressure on the throttle lever lowers the thrust and reduces speed (page 9).

Starting & Stopping the Engine

You should always follow the correct starting procedure described in the following section. For your safety, avoid starting or operating the engine in an enclosed area, such as a garage. The JetSurf™'s exhaust fumes contain poisonous carbon monoxide gas that can collect rapidly in an enclosed area and cause illness or death.



Running the engine while the JetSurf™ is out of the water without any water circulating through the cooling system will damage the engine.



Starting the Engine

PREPARATION: Prior to starting the engine, make sure the JetSurf™ is in at least three feet (3' or 90 cm) of water that is free of debris and underwater vegetation. Check that there are no people, pets, obstacles, or other watercraft in the immediate vicinity. When the engine is running, long hair, PFD straps, or loose clothing can be sucked into the intake grate and become entangled in the impeller which could cause someone to be held underwater and drown. Make sure that people, or pets, stay away from the intake grate when the engine is running.

PROCEDURE:

1. Steady the JetSurf™ with your hand or another person's assistance. Grasp the handle in either hand. Make sure no one is standing directly behind the JetSurf™
2. Attach the magnetic plug to appropriate wrist.
3. Set to starting position, one knee on the rear part of the JetSurf™ and hold the front handles on JetSurf™ with both hands.
4. Insert magnetic plug and wait until the engine starts. Push down the throttle lever immediately after you feel the engine starting. The engine automatically starts 5 seconds after the magnetic plug was inserted. If the engine does not start, pull out magnetic plug and repeat the start procedure again. Make maximum 3 attempts and then wait few minutes. If this happens, take care to remove all the water from the engine compartment.
5. The delay between start attempts will avoid unnecessarily discharging the battery or damaging the starter motor. Once the engine has started, the jet pump will begin producing thrust and the JetSurf™ will begin to move forward.



Stopping the Engine

PROCEDURE: As with starting the engine, be sure there is at least three feet (3' or 90 cm) of water beneath the JetSurf™ to prevent debris or underwater vegetation being sucked into the water intake system that could damage the jet pump. Move throttle lever off and pull out kill switch. Engine will automatically stop and rider have to immediately leave the JetSurf™.



When the engine is not running, the JetSurf™ should lie on the water itself, without any object or person laying on it. Otherwise, the JetSurf™ and its engine will Flood!

Flooded Engine

If the engine fails to start after repeated attempts, it may be flooded with excess fuel. To clear a flooded engine:

1. Open the throttle fully.
2. Press the start button for 5 seconds.
3. Follow the normal starting procedure.
4. If the engine starts and the idle is erratic, open the throttle slightly.
5. If the engine does not start wait 10 seconds, then repeat steps 1 through 3.

If the engine still refuses to start, refer to the section "If Your Engine Quits or Won't Start"

Techniques of Launching the JetSurf™



Launching from Shallow Water:

Place the JetSurf™ in about 3 feet (3' or 90 cm) of water and while standing beside the JetSurf™, position one knee on the deck to stabilize the board and help assume your stance once you begin moving. Hold the board steady with your knee, grip the handle, and press down on the throttle lever. Use your other hand to insert magnetic plug. When the JetSurf™ starts up lift yourself up on to the deck. Remember to lean into the nose of the JetSurf™ as it rises up.



Launching from Deep Water:

You should practice launching in shallow water before attempting to launch in deeper water. When you fall and/or shut off the engine while operating in deep water, do not immediately remount the JetSurf™. While floating in the water on either side of the JetSurf™, grasp the handle, insert magnetic switch, pull down throttle lever and maneuver yourself around to the back of the JetSurf™ and pull yourself on to the rear of the deck.

Performing this remounting procedure as promptly as possible will help keep the interior of the JetSurf™'s hull dry by keeping the sealed areas of the hull above the water line while gliding across the surface of the water.



IMPORTANT!

It is the owner's responsibility to immediately remove all excess water from the engine compartment. Failure to remove any accumulation of water in the engine compartment can cause damage to the engine and also damage electrical components. Water damage is not part of the warranty agreement from the dealerships or the manufacturer. Owners will be held solely responsible for the financial costs to repair or replace any engine or electrical components that are damaged by failure to remove excess water left inside a JetSurf™.



Presented by

